

# Theory Test Theme 2

Assessment

2

Date _____	Class _____	Name _____
------------	-------------	------------

**Circle the best answer to each question.**

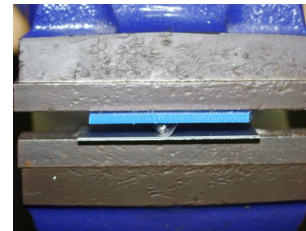
**Circle only one answer.**

- 1 Unit** production is a production form, used for producing:
- A aeroplanes
  - B nails and screws
  - C bridges
  - D bicycles.

- 2 Mass** production is a production form, used for producing:
- A houses
  - B nails and screws
  - C bridges
  - D bicycles.

- 3 Series** production is a production form, used for producing:
- A TV-films
  - B nails and screws
  - C bridges
  - D bicycles.

- 4** You compare metals.  
In a vice, you press a steel ball into the test material.



This way, you test the property:

- A strength
  - B hardness
  - C stiffness
  - D buckling properties.
- 5** In a laboratory, a metal bar is stretched out till it breaks.  
In this case, people are testing the material property:
- A strength
  - B hardness
  - C stiffness
  - D buckling properties.



- 6 You need to attach a plastic rear light onto your bicycle. You use:
- A super glue
  - B screws with a sharp point
  - C small bolts and nuts
  - D blind rivets.

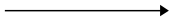
- 7 What **kind of a drawing** is this?



- A pictogram
  - B anti-smoke sign
  - C isometric drawing
  - D sketch.
- 8 Tube **sections** are used to make constructions:
- A lighter and weaker
  - B lighter but still strong enough
  - C stronger and cheaper
  - D stronger and heavier.

- 9 Which **construction form** is the most stiff *and* light one?

- A tube
- B rectangle
- C massive beam
- D triangle.

- 10 In technical drawings,  indicates a:
- A centre line
  - B dimension line
  - C outline
  - D arrow line.



- 11 The bridge above is a typical:
- A suspension bridge
  - B arch bridge
  - C stay bridge
  - D truss bridge.

- 12 The best bridge for a deep estuary (sea arm), is a:
- A suspension bridge
  - B arch bridge
  - C stay bridge
  - D truss bridge.

**13 CAD** means:

- A Computer App Design
- B Construct And Destroy
- C Computer Aided Design
- D Construction & Design.

**14** You make a beam bridge.

The bridge must not collapse.

You make some parts stronger, to prevent buckling. These are:

- A the upper parts
- B the lower parts
- C the cables
- D the pylons.

**15 Permanent** joints are for example:

- A Velcro and soldering
- B soldering and bolts
- C paper clips and shoe laces
- D soldering and rivets.

**16 Detachable** joints are:

- A velcro and soldering
- B soldering and bolts
- C paper clips and shoe laces
- D soldering and rivets.

**17** Your **occupation** is: shoe maker.

Which joints are you using most?

- A glue and solder
- B glue and stitches (sewing)
- C glue and nails
- D glue and velcro.

**18** In which profession do you **not** really make a technical product yourself?

- A backhoe driver
- B electrician
- C riveter
- D worker in a clothes atelier.

**19** In **technical drawings**, you use thick lines for:

- A dimension lines
- B outlines
- C arrowheads
- D centre lines.

**20 Construction lines** are...

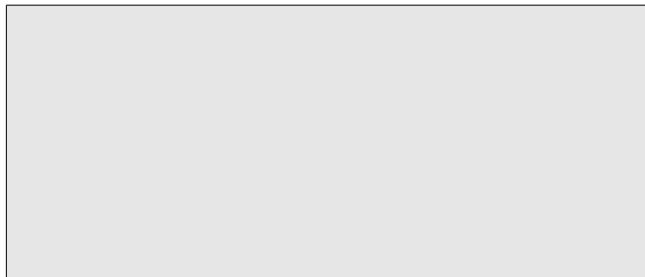
- A strong lines in a construction
- B permanent lines in a drawing
- C cables in a suspension bridge
- D temporary help lines.

**Answer to the following open questions.**  
**Use short, but complete sentences.**

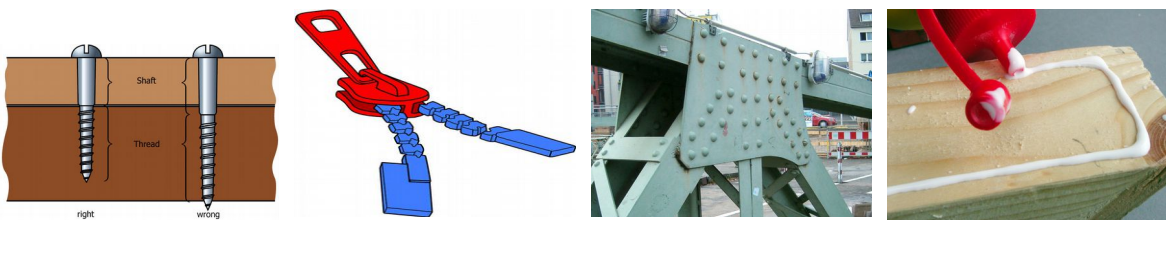
**21** Name three detachable joints you can use in clothes.

- 1 \_\_\_\_\_
- 2 \_\_\_\_\_
- 3 \_\_\_\_\_

**22** a) Draw the horizontal en vertical centre lines in the drawing below.  
 b) Also draw the dimension lines and the dimensions.



**23** Below, you see four joining methods. Write their names under the picture.



**24** You have a sheet of paper of the size A3.

a) What number of A5 sheets can you make out of the A3 sheet? \_\_\_\_\_

What is the advantage of the paper sizes A0, A1 etc. for the environment?

b) \_\_\_\_\_

**25** You search for information on the Internet. You use Google.

a) What *IS* a search engine?

b) You cannot mention Google as a source of information. Why not?

\_\_\_\_\_

\_\_\_\_\_

**26** Give the Dutch translation:

a unit production \_\_\_\_\_ d permanent joint \_\_\_\_\_

b Velcro \_\_\_\_\_ e stay bridge \_\_\_\_\_

c soldering iron \_\_\_\_\_ f glue \_\_\_\_\_

**27** Give the English translation:

a spijker \_\_\_\_\_ d klinknagel \_\_\_\_\_

b hangbrug \_\_\_\_\_ e bout en moer \_\_\_\_\_

c hardheid \_\_\_\_\_ f beroep \_\_\_\_\_